



**EUREKA**  
**PARK**  
SECTOR 150 NOIDA

#Home**Smart**Home

**FLOOR PLANS**

## CONTEMPORARY LIFESTYLE BACKED BY DECADES OF TRUST

Welcome to Eureka Park, where a delightful experience unfurls with every step. Where modern day aspirations meet a luxurious indulgence, backed by the unshakeable trust of Tata. An epitome of modernity, an abode of lavishness and a home to smartness, Eureka Park is so much more than just a home.

### GOLD RATED BY IGBC

Eureka Park is pre-certified as Gold Rated by IGBC (Indian Green Building Council) for giving equal prominence to eco-sustainability, water and energy conservation through eco-sensible lifestyle features integrated within the project.

### CODED GREEN BY UP-RERA

Eureka Park has been coded green (safe and credible) by UP-RERA. The Uttar Pradesh Real Estate Regulatory Authority colour codes different real estate projects to mark developer's reliability; wherein a green coding means safe for investing.

**Source:** <https://realty.economictimes.indiatimes.com/news/industry/up-rera-colour-codes-to-mark-developer-reliability/78639534>



TATA VALUE HOMES®



## LEGEND

- 01. SKATING TRACK
- 02. PALM COURT
- 03. COMMUNITY BUILDING & SPORTS BLOCK
- 04. SWIMMING POOL
- 05. KIDS' POOL
- 06. MULTIPURPOSE PARTY LAWN
- 07. GAZEBOS
- 08. CONVENIENT SHOPPING AREA
- 09. LANDSCAPED PLAZA SPACE
- 10. WALKING TRACK
- 11. OPEN SPACE FOR CULTURAL ACTIVITIES
- 12. AMPHITHEATRE
- 13. YOGA SQUARE
- 14. EXERCISE GARDEN
- 15. MULTIPURPOSE OPEN LAWN
- 16. KIDS' PLAY AREA
- 17. OPEN SEATING AREA
- 18. INTERNATIONAL SIZED TENNIS COURTS#
- 19. BADMINTON COURTS
- 20. BASKETBALL COURT
- 21. PUTTING PRACTICE GREENS

TOTAL LAND AREA: 20.74 ACRES

**TYPICAL FLOOR PLAN**



TOWER-A1 & A3		
Unit type	Unit Carpet Area	Balcony Area
UNIT-01	60.164	12.580
UNIT-02	59.555	12.581
UNIT-03	60.164	12.580
UNIT-04	60.164	12.580
UNIT-05	60.164	12.580



MASTER PLAN



**DISCLAIMERS:**

All Dimensions are in millimeters (and in bracket feet inches)  
All areas are in square meters

Measurements are approximate and subject to minor variations.  
Furnitures, fixtures and specifications provided in the plan are not part of the offered apartment for sale.

**PHASE I  
TOWERS  
A01 & A03**



**EUREKA  
PARK  
SECTOR 150 NOIDA**

**TYPICAL FLOOR PLAN**



TOWER-A2 & A4		
Unit type	Unit Carpet Area	Balcony Area
UNIT-01	60.164	12.580
UNIT-02	59.555	12.581
UNIT-03	60.164	12.580
UNIT-04	60.164	12.580
UNIT-05	60.164	12.580



MASTER PLAN



**DISCLAIMERS:**

All Dimensions are in millimeters (and in bracket feet inches)  
All areas are in square meters

Measurements are approximate and subject to minor variations.  
Furnitures, fixtures and specifications provided in the plan are not part of the offered apartment for sale.

**PHASE I  
TOWERS  
A02 & A04**



**EUREKA  
PARK  
SECTOR 150 NOIDA**

**TYPICAL FLOOR PLAN**



TOWER-C20		
Unit type	Unit Carpet Area	Balcony Area
UNIT-01	91.169	15.736
UNIT-02	91.169	15.736
UNIT-03	91.180	15.736
UNIT-04	91.179	15.736



MASTER PLAN



**DISCLAIMERS:**

All Dimensions are in millimeters (and in bracket feet inches)  
All areas are in square meters

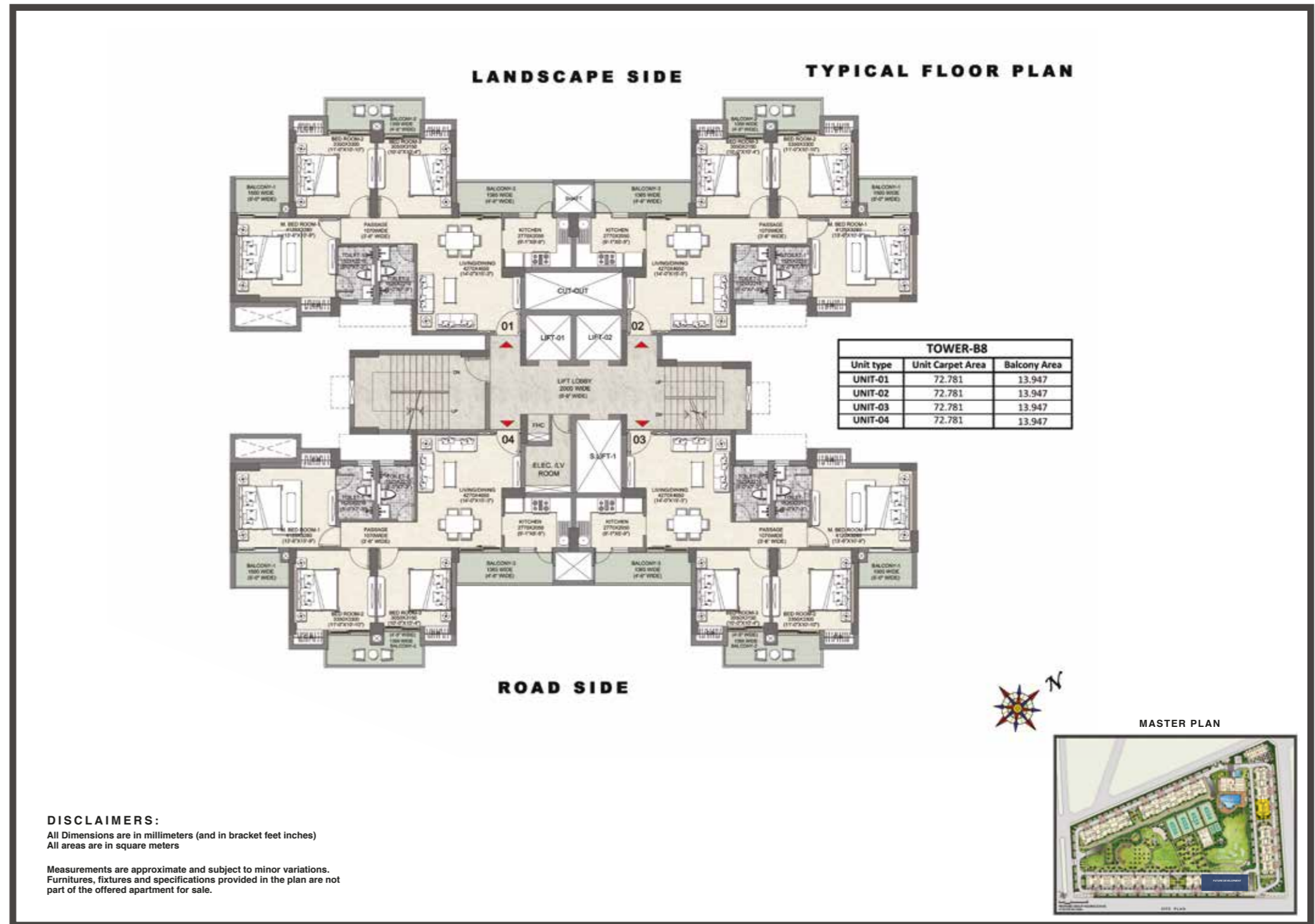
Measurements are approximate and subject to minor variations.  
Furnitures, fixtures and specifications provided in the plan are not part of the offered apartment for sale.

**PHASE II  
TOWERS  
C15, C16,  
C17 & C18**



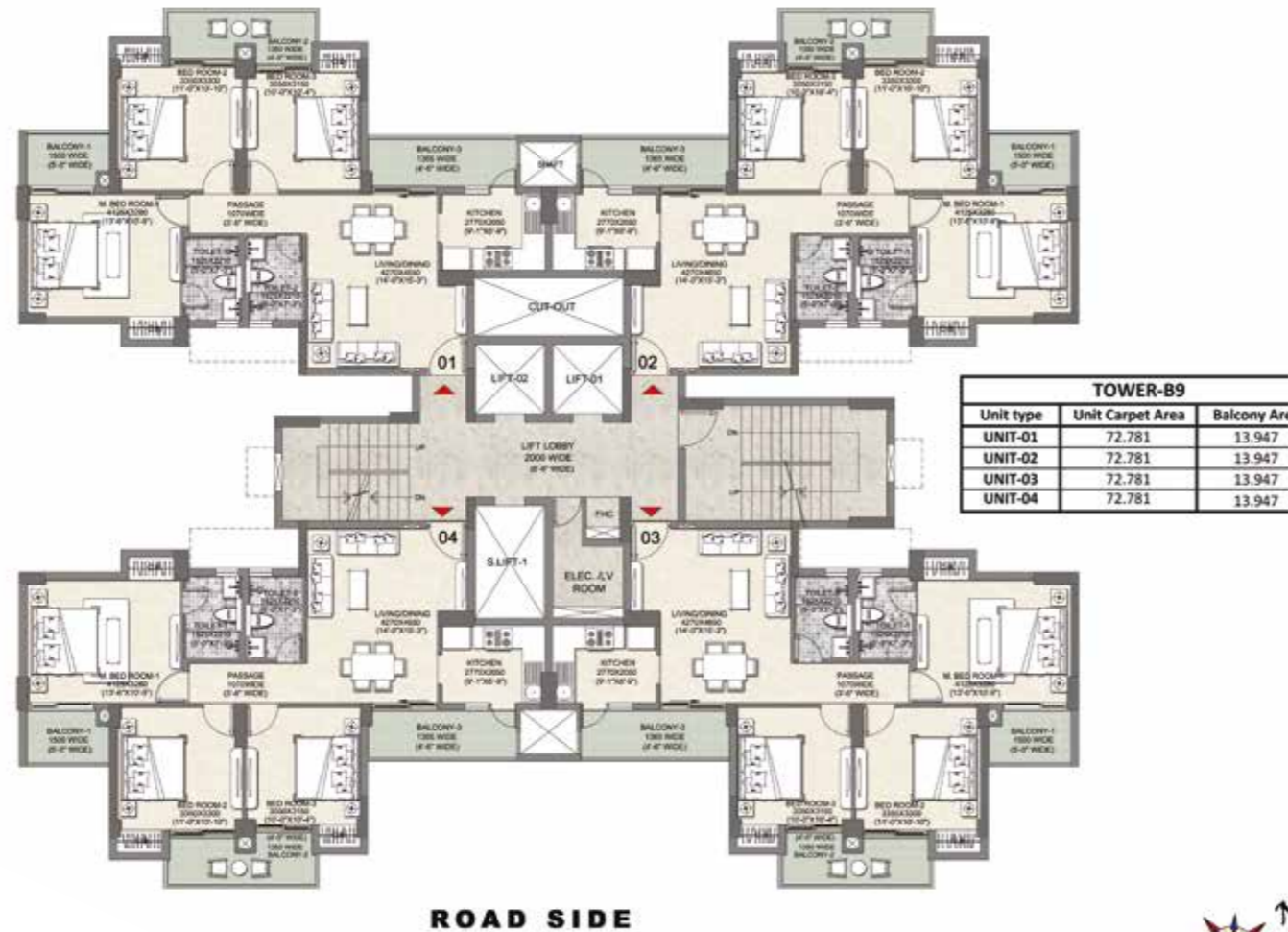
**EUREKA  
PARK  
SECTOR 150 NOIDA**

**PHASE II  
TOWER  
B11**



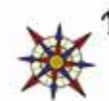
**EUREKA  
PARK**  
SECTOR 150 NOIDA

**LANDSCAPE SIDE** **TYPICAL FLOOR PLA**



TOWER-B9		
Unit type	Unit Carpet Area	Balcony Area
UNIT-01	72.781	13.947
UNIT-02	72.781	13.947
UNIT-03	72.781	13.947
UNIT-04	72.781	13.947

**ROAD SIDE**



MASTER PLAN



**DISCLAIMERS:**

All Dimensions are in millimeters (and in bracket feet inches)  
All areas are in square meters

Measurements are approximate and subject to minor variations.  
Furnitures, fixtures and specifications provided in the plan are not part of the offered apartment for sale.

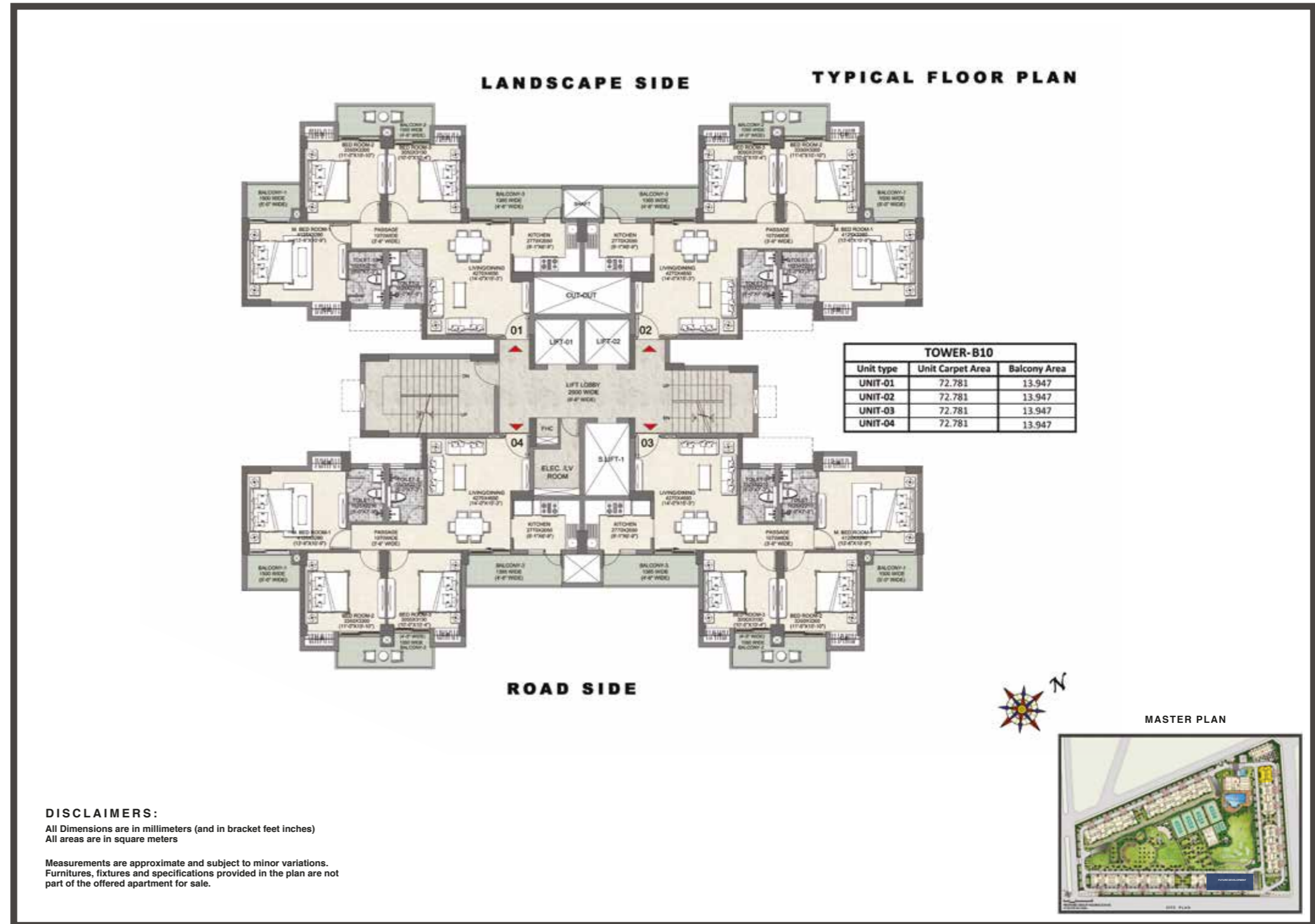
**PHASE II**  
**TOWER**  
**B12**



**EUREKA**  
**PARK**  
SECTOR 150 NOIDA



**PHASE II  
TOWER  
B14**

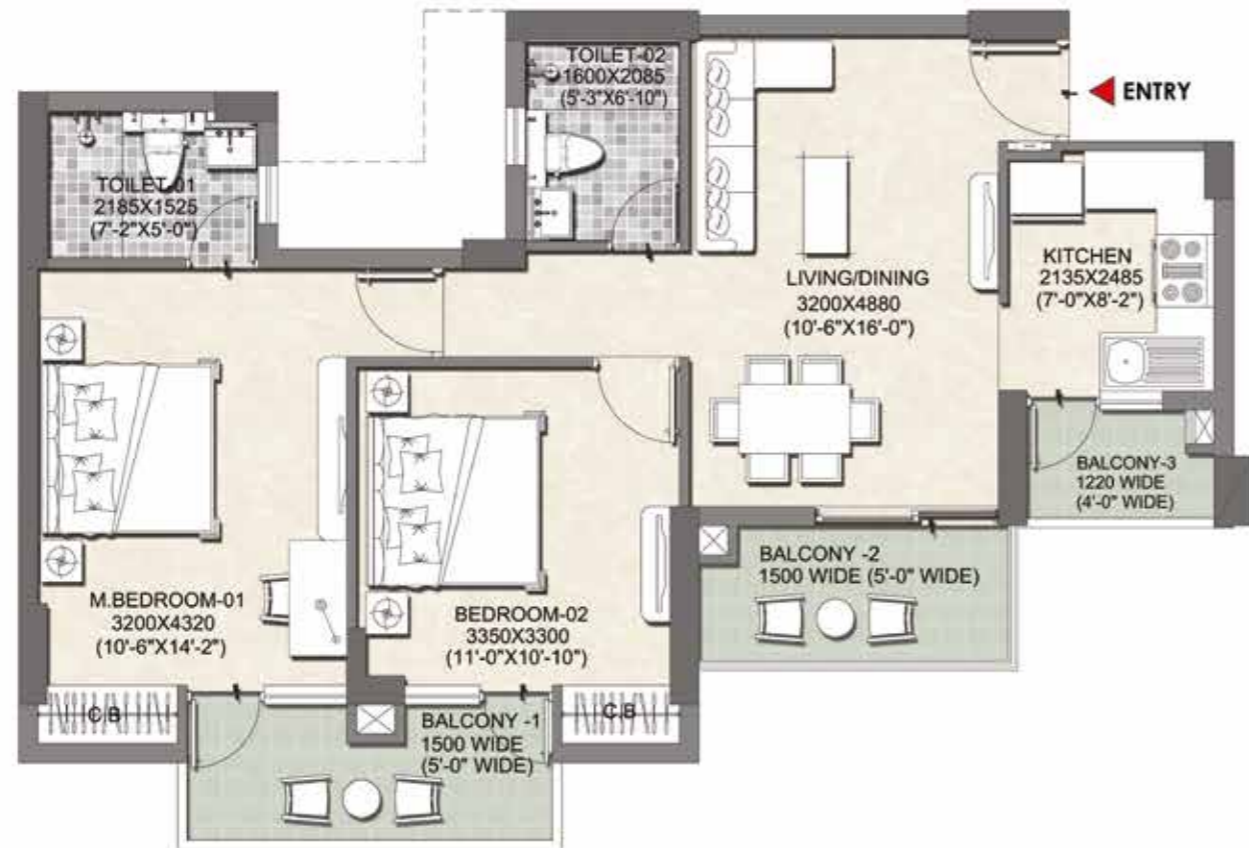


**EUREKA  
PARK**  
SECTOR 150 NOIDA

**TYPICAL UNIT**

TOWER-01 TO 04

**2 BHK,  
2 TOILET**



**TYPE-A UNIT-01,03,04,05**

**UNIT ORIENTATION AS PER TYPICAL FLOOR PLAN**

**DISCLAIMERS:**

All Dimensions are in millimeters (and in bracket feet inches)

**TYPICAL FLOOR PLAN**



**PHASE I**

**INTELLO  
1100**

**CARPET AREA**

647.61 SQ FT (60.164 SQ MT)

**EXCLUSIVE BALCONY AREA**

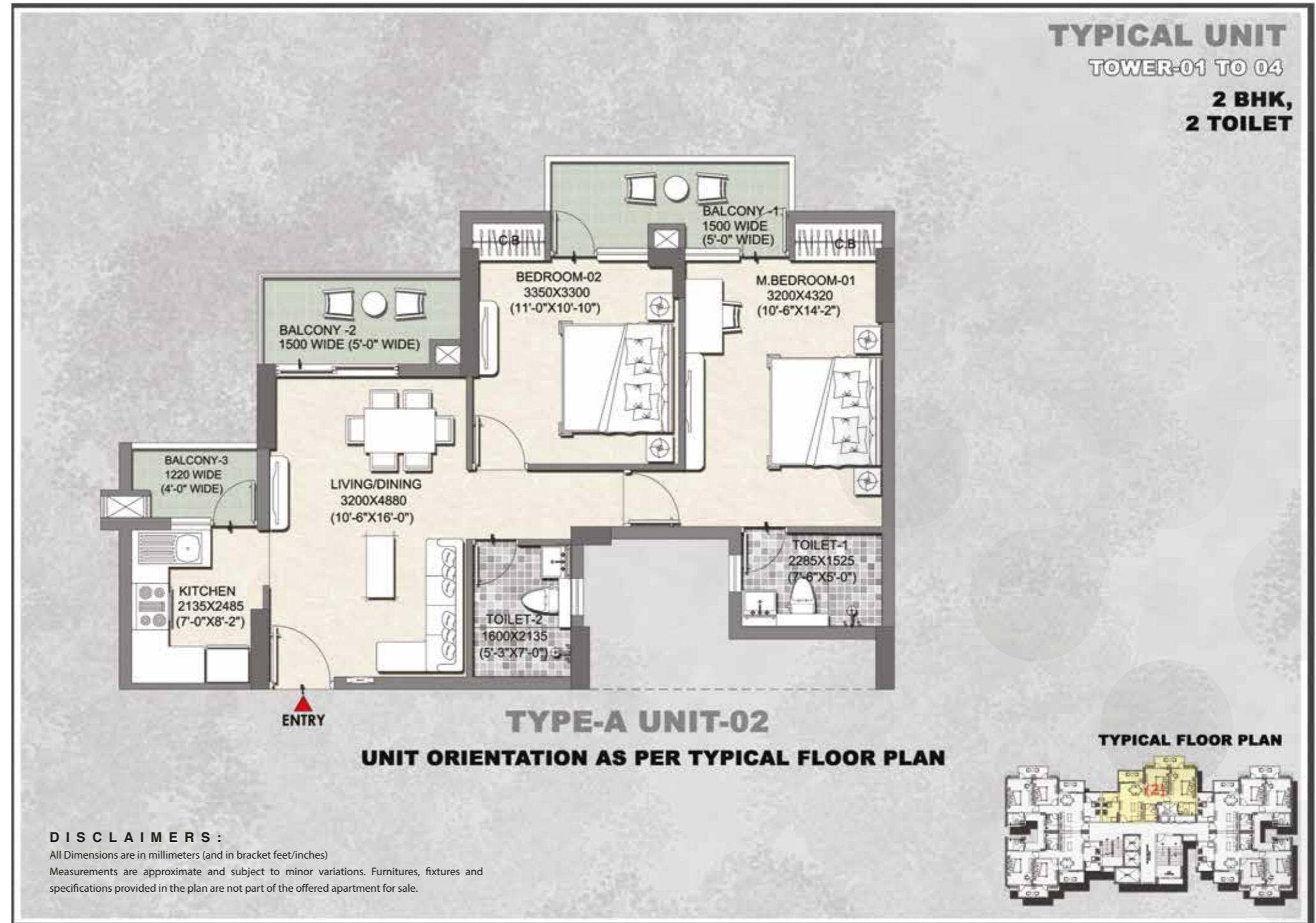
135.41 SQ FT (12.580 SQ MT)



**EUREKA  
PARK**  
SECTOR 150 NOIDA

**PHASE I**  
**INTELLO**  
**1100**

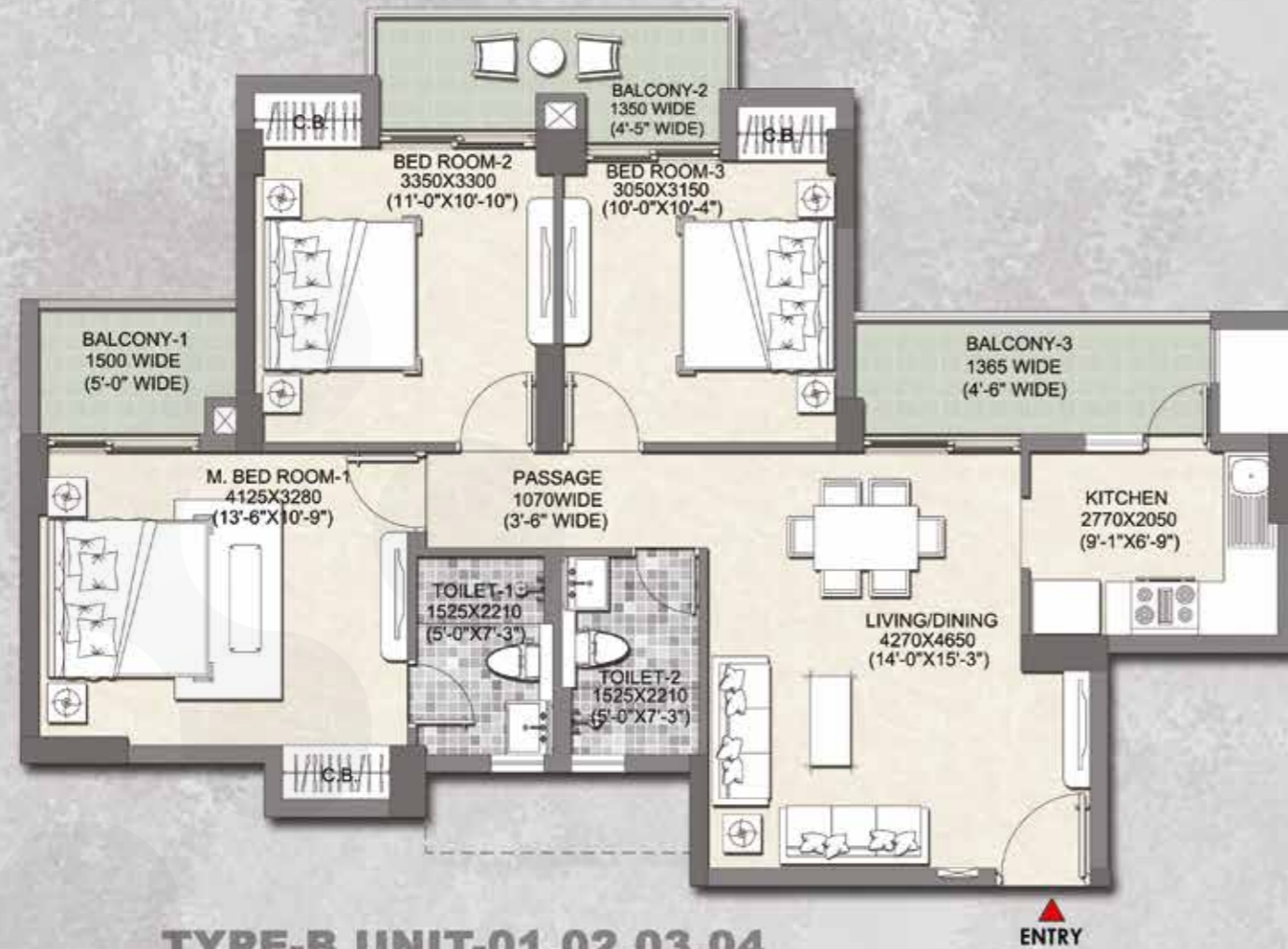
**CARPET AREA**  
647.61 SQ FT (60.164 SQ MT)  
**EXCLUSIVE BALCONY AREA**  
135.41 SQ FT (12.580 SQ MT)



**EUREKA**  
**PARK**  
SECTOR 150 NOIDA

**TYPICAL UNIT**  
TOWER-08 TO 10

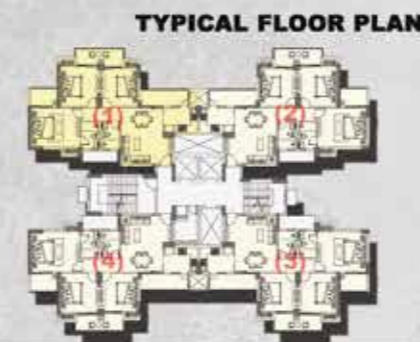
**3 BHK,  
2 TOILET**



**TYPE-B UNIT-01,02,03,04**  
**UNIT ORIENTATION AS PER TYPICAL FLOOR PLAN**

**DISCLAIMERS :**

All Dimensions are in millimeters (and in bracket feet/inches)  
Measurements are approximate and subject to minor variations. Furnitures, fixtures and specifications provided in the plan are not part of the offered apartment for sale.



**PHASE II**  
**BRIGHTUS**  
**1285**

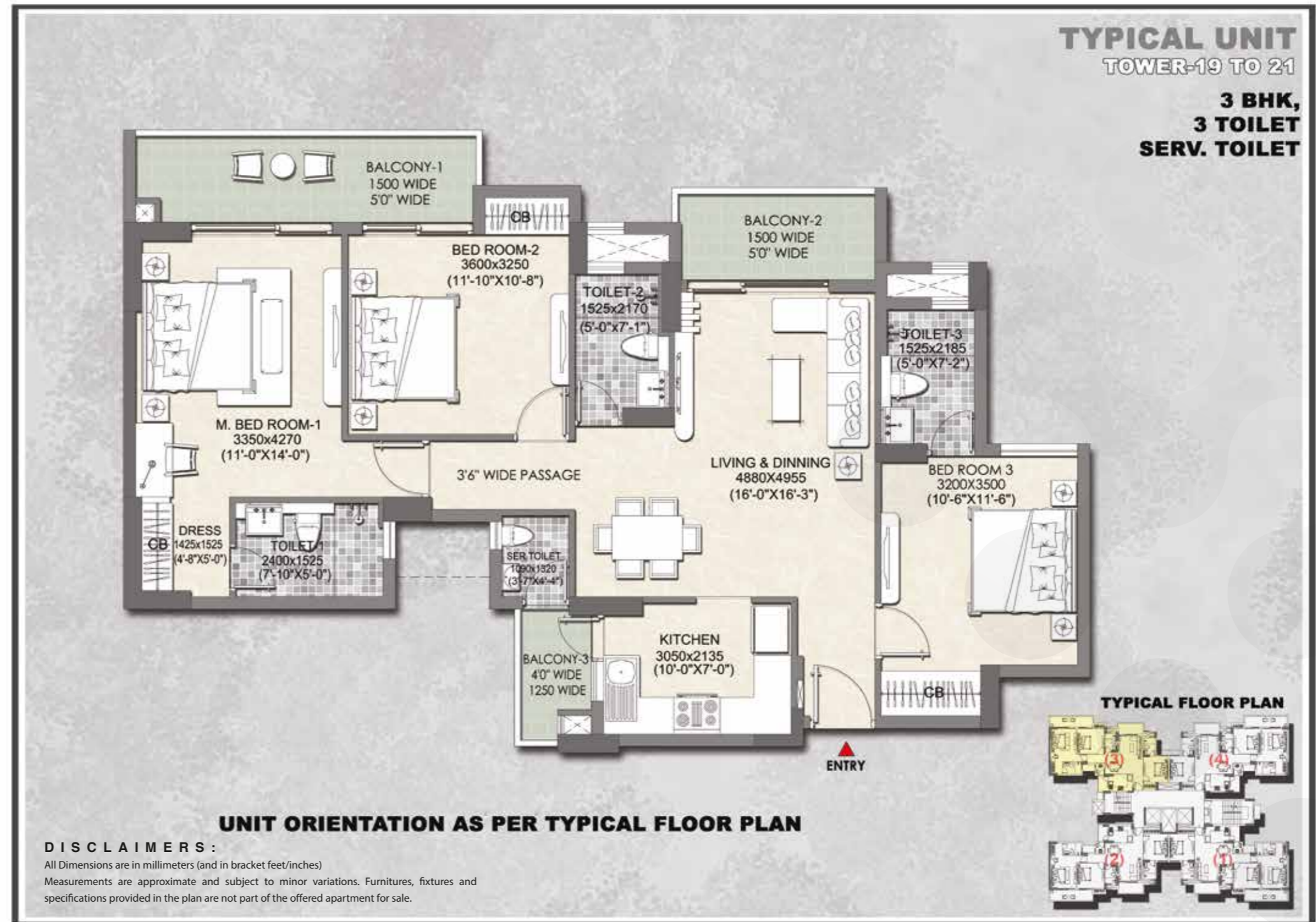
**CARPET AREA**  
783.41 SQ FT (72.781 SQ MT)  
**EXCLUSIVE BALCONY AREA**  
150.13 SQ FT (13.947 SQ MT)



**EUREKA**  
**PARK**  
SECTOR 150 NOIDA

**PHASE II**  
**PRIMUS**  
**1575**

**CARPET AREA**  
981.34 SQ FT (91.169 SQ MT)  
**EXCLUSIVE BALCONY AREA**  
169.38 SQ FT (15.736 SQ MT)



**EUREKA**  
**PARK**  
SECTOR 150 NOIDA



**EUREKA  
PARK**  
SECTOR 150 NOIDA

#Home**Smart**Home

**FLOOR PLANS**

## CONTEMPORARY LIFESTYLE BACKED BY DECADES OF TRUST

Welcome to Eureka Park, where a delightful experience unfurls with every step. Where modern day aspirations meet a luxurious indulgence, backed by the unshakeable trust of Tata. An epitome of modernity, an abode of lavishness and a home to smartness, Eureka Park is so much more than just a home.

### GOLD RATED BY IGBC

Eureka Park is pre-certified as Gold Rated by IGBC (Indian Green Building Council) for giving equal prominence to eco-sustainability, water and energy conservation through eco-sensible lifestyle features integrated within the project.

### CODED GREEN BY UP-RERA

Eureka Park has been coded green (safe and credible) by UP-RERA. The Uttar Pradesh Real Estate Regulatory Authority colour codes different real estate projects to mark developer's reliability; wherein a green coding means safe for investing.

**Source:** <https://realty.economictimes.indiatimes.com/news/industry/up-rera-colour-codes-to-mark-developer-reliability/78639534>





## LEGEND

- 01. SKATING TRACK
- 02. PALM COURT
- 03. COMMUNITY BUILDING & SPORTS BLOCK
- 04. SWIMMING POOL
- 05. KIDS' POOL
- 06. MULTIPURPOSE PARTY LAWN
- 07. GAZEBOS
- 08. CONVENIENT SHOPPING AREA
- 09. LANDSCAPED PLAZA SPACE
- 10. WALKING TRACK
- 11. OPEN SPACE FOR CULTURAL ACTIVITIES
- 12. AMPHITHEATRE
- 13. YOGA SQUARE
- 14. EXERCISE GARDEN
- 15. MULTIPURPOSE OPEN LAWN
- 16. KIDS' PLAY AREA
- 17. OPEN SEATING AREA
- 18. INTERNATIONAL SIZED TENNIS COURTS#
- 19. BADMINTON COURTS
- 20. BASKETBALL COURT
- 21. PUTTING PRACTICE GREENS

TOTAL LAND AREA: 20.74 ACRES



**TYPICAL FLOOR PLAN**



TOWER-A1 & A3		
Unit type	Unit Carpet Area	Balcony Area
UNIT-01	60.164	12.580
UNIT-02	59.555	12.581
UNIT-03	60.164	12.580
UNIT-04	60.164	12.580
UNIT-05	60.164	12.580



MASTER PLAN



**DISCLAIMERS:**

All Dimensions are in millimeters (and in bracket feet inches)  
All areas are in square meters

Measurements are approximate and subject to minor variations.  
Furnitures, fixtures and specifications provided in the plan are not part of the offered apartment for sale.

**PHASE I  
TOWERS  
A01 & A03**



**EUREKA  
PARK  
SECTOR 150 NOIDA**

**TYPICAL FLOOR PLAN**



TOWER-A2 & A4		
Unit type	Unit Carpet Area	Balcony Area
UNIT-01	60.164	12.580
UNIT-02	59.555	12.581
UNIT-03	60.164	12.580
UNIT-04	60.164	12.580
UNIT-05	60.164	12.580



MASTER PLAN



**DISCLAIMERS:**

All Dimensions are in millimeters (and in bracket feet inches)  
All areas are in square meters

Measurements are approximate and subject to minor variations.  
Furnitures, fixtures and specifications provided in the plan are not part of the offered apartment for sale.

**PHASE I  
TOWERS  
A02 & A04**



**EUREKA  
PARK**  
SECTOR 150 NOIDA

**TYPICAL FLOOR PLAN**



TOWER-C20		
Unit type	Unit Carpet Area	Balcony Area
UNIT-01	91.169	15.736
UNIT-02	91.169	15.736
UNIT-03	91.180	15.736
UNIT-04	91.179	15.736



MASTER PLAN



**DISCLAIMERS:**

All Dimensions are in millimeters (and in bracket feet inches)  
All areas are in square meters

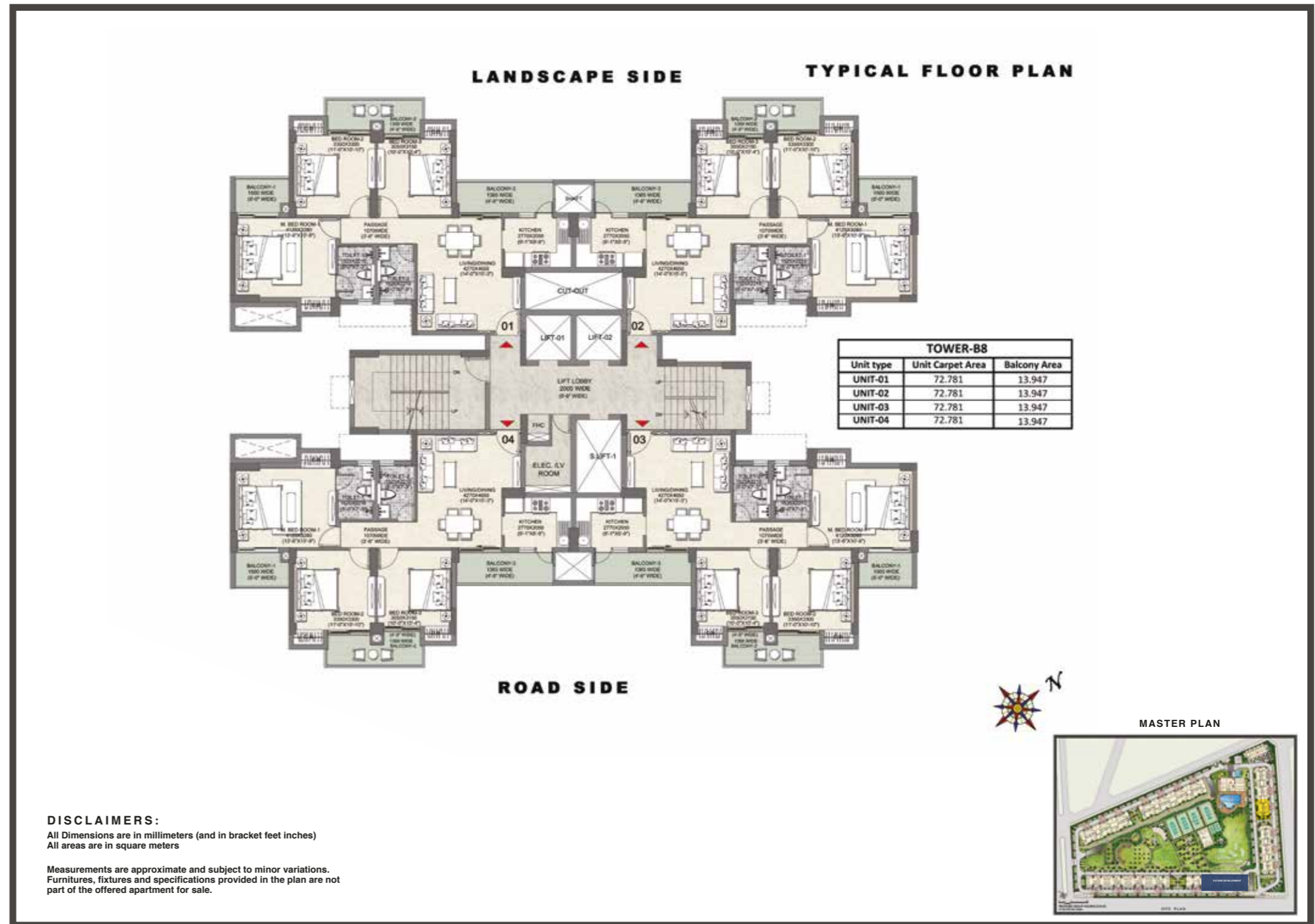
Measurements are approximate and subject to minor variations.  
Furnitures, fixtures and specifications provided in the plan are not part of the offered apartment for sale.

**PHASE II  
TOWERS  
C15, C16,  
C17 & C18**



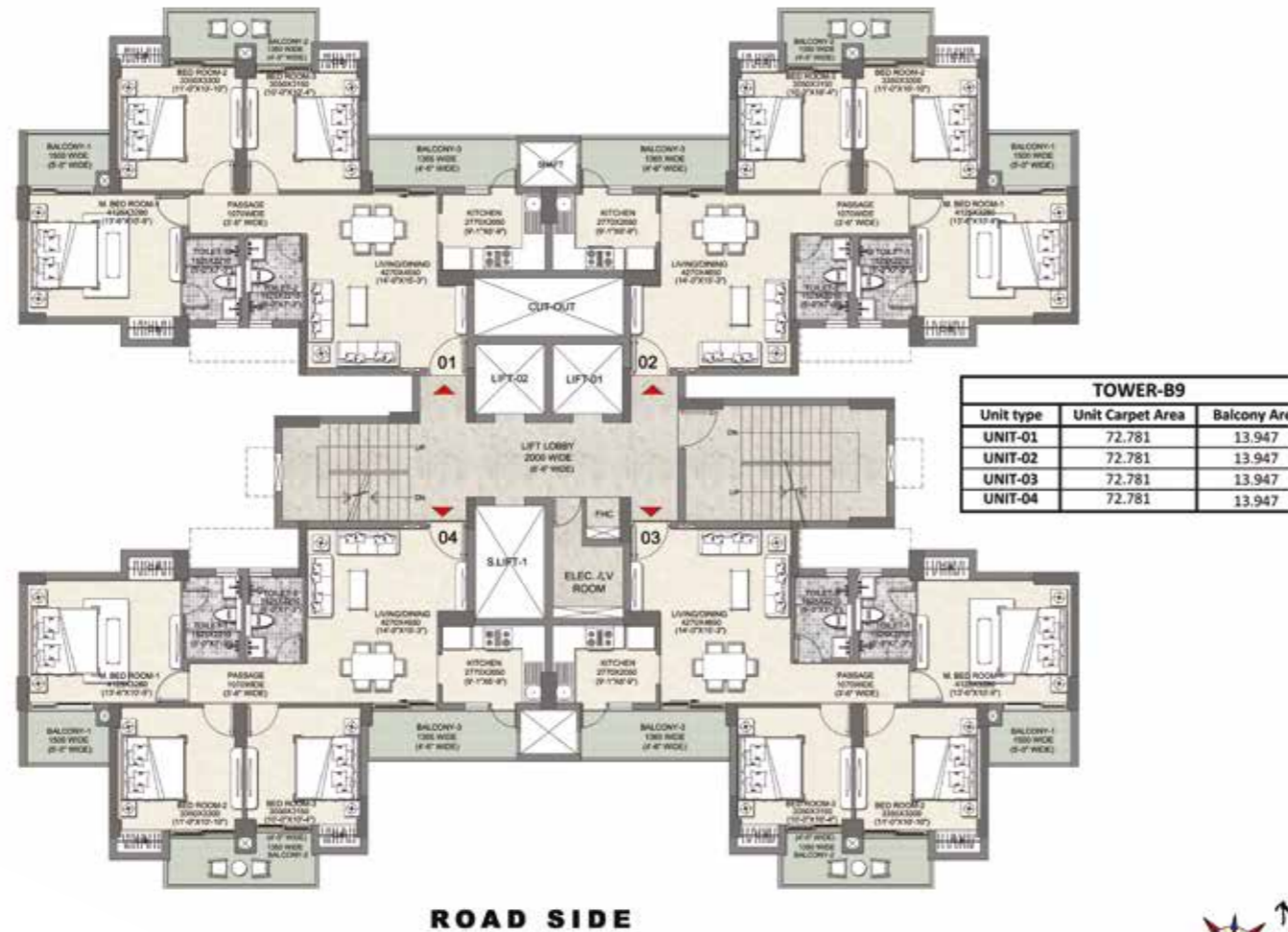
**EUREKA  
PARK  
SECTOR 150 NOIDA**

**PHASE II  
TOWER  
B11**



**EUREKA  
PARK**  
SECTOR 150 NOIDA

**LANDSCAPE SIDE** **TYPICAL FLOOR PLA**



MASTER PLAN



**DISCLAIMERS:**

All Dimensions are in millimeters (and in bracket feet inches)  
All areas are in square meters

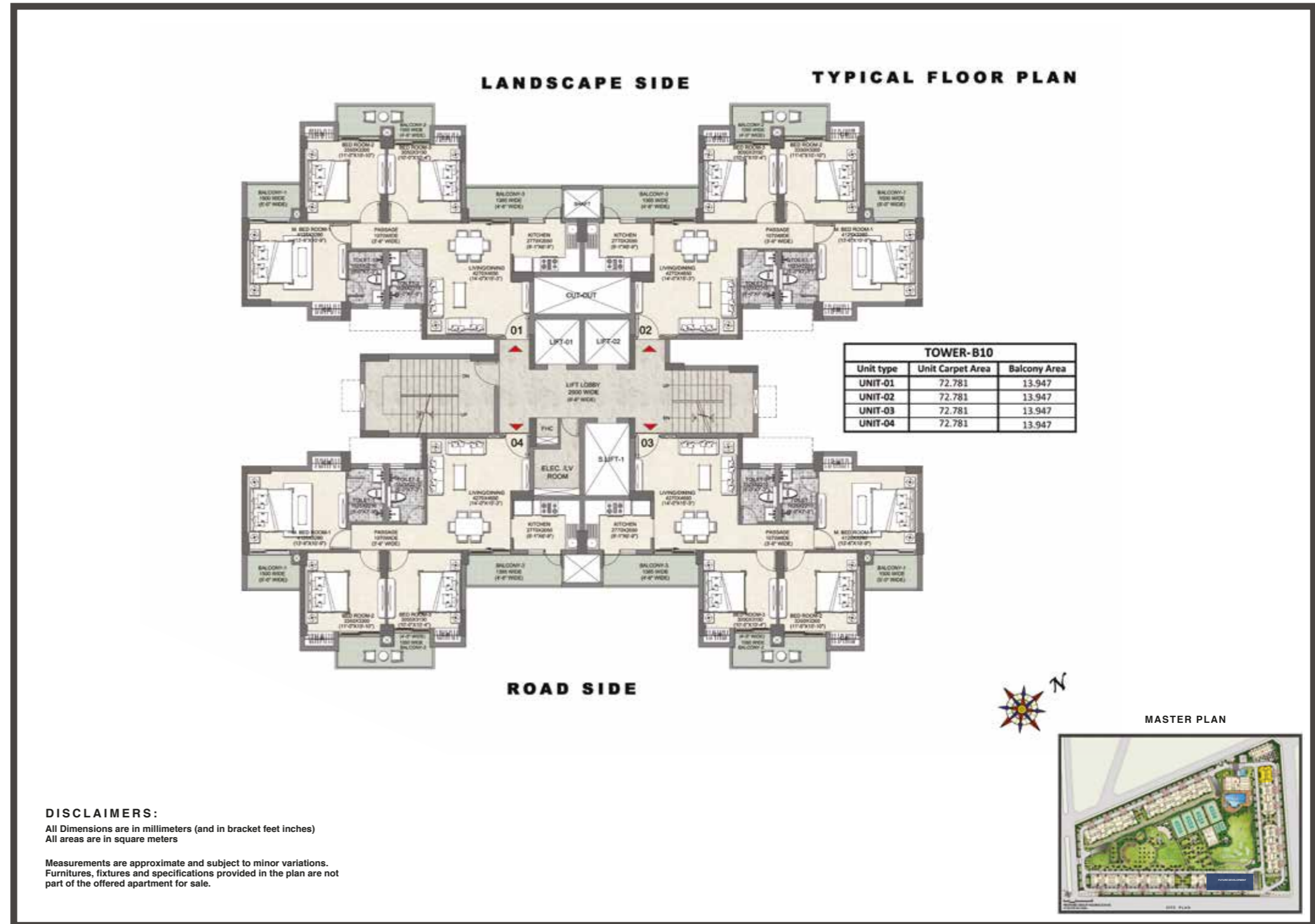
Measurements are approximate and subject to minor variations.  
Furnitures, fixtures and specifications provided in the plan are not part of the offered apartment for sale.

**PHASE II**  
**TOWER**  
**B12**



**EUREKA**  
**PARK**  
SECTOR 150 NOIDA

**PHASE II  
TOWER  
B14**

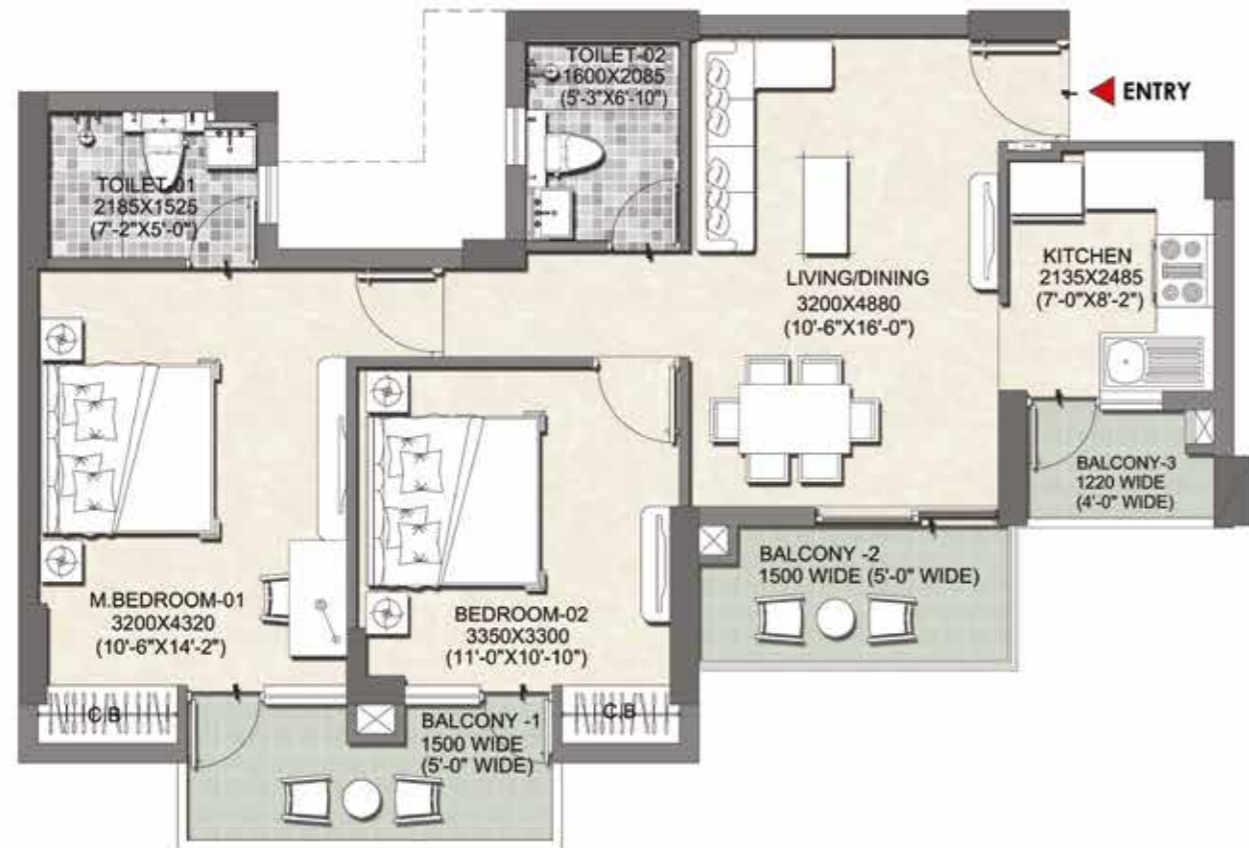


**EUREKA  
PARK**  
SECTOR 150 NOIDA

**TYPICAL UNIT**

TOWER-01 TO 04

**2 BHK,  
2 TOILET**



**TYPE-A UNIT-01,03,04,05**

**UNIT ORIENTATION AS PER TYPICAL FLOOR PLAN**

**DISCLAIMERS:**

All Dimensions are in millimeters (and in bracket feet inches)

**TYPICAL FLOOR PLAN**



**PHASE I**

**INTELLO  
1100**

**CARPET AREA**

647.61 SQ FT (60.164 SQ MT)

**EXCLUSIVE BALCONY AREA**

135.41 SQ FT (12.580 SQ MT)



**EUREKA  
PARK**  
SECTOR 150 NOIDA

# PHASE I

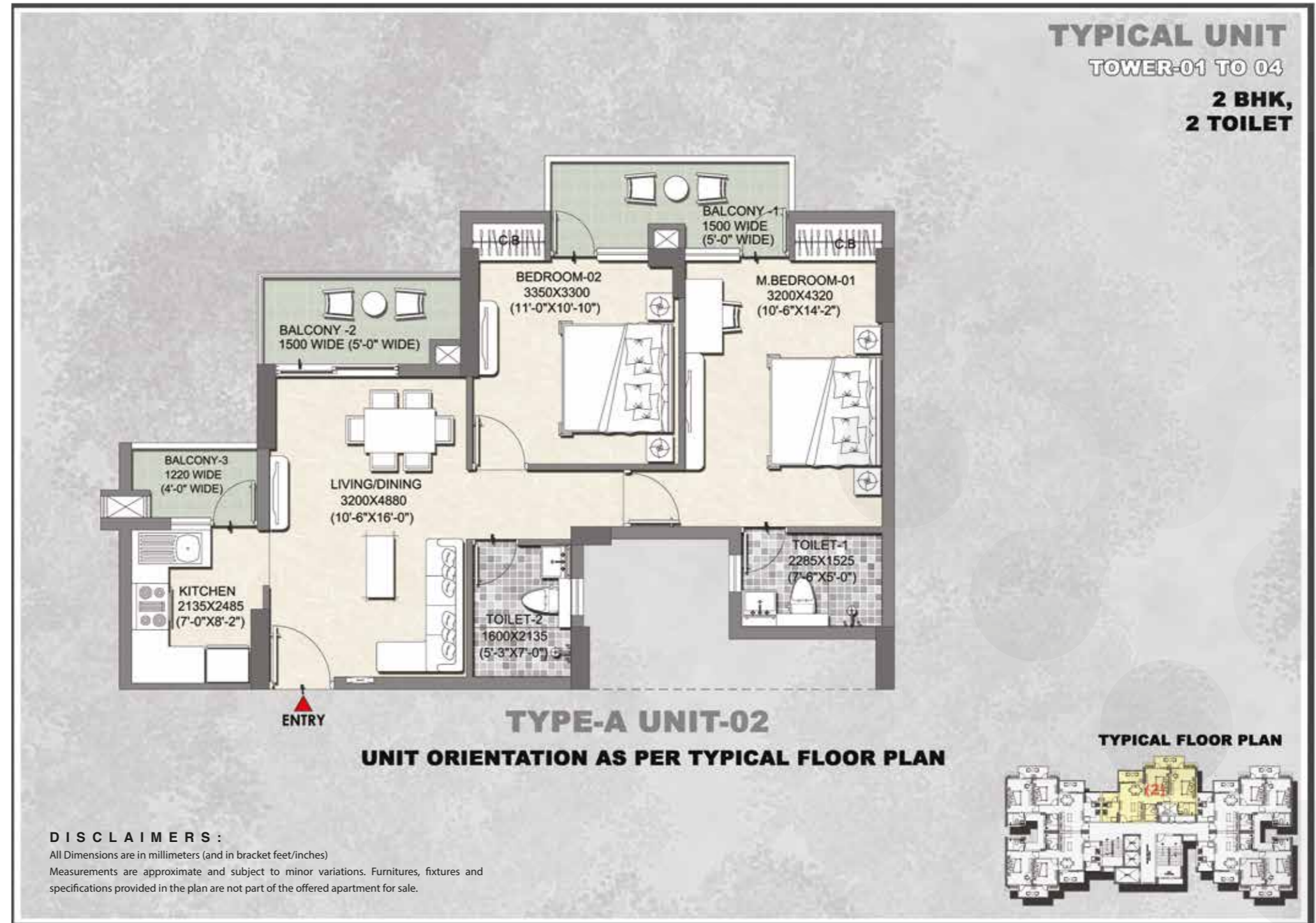
# INTELLO 1100

### CARPET AREA

647.61 SQ FT (60.164 SQ MT)

### EXCLUSIVE BALCONY AREA

135.41 SQ FT (12.580 SQ MT)



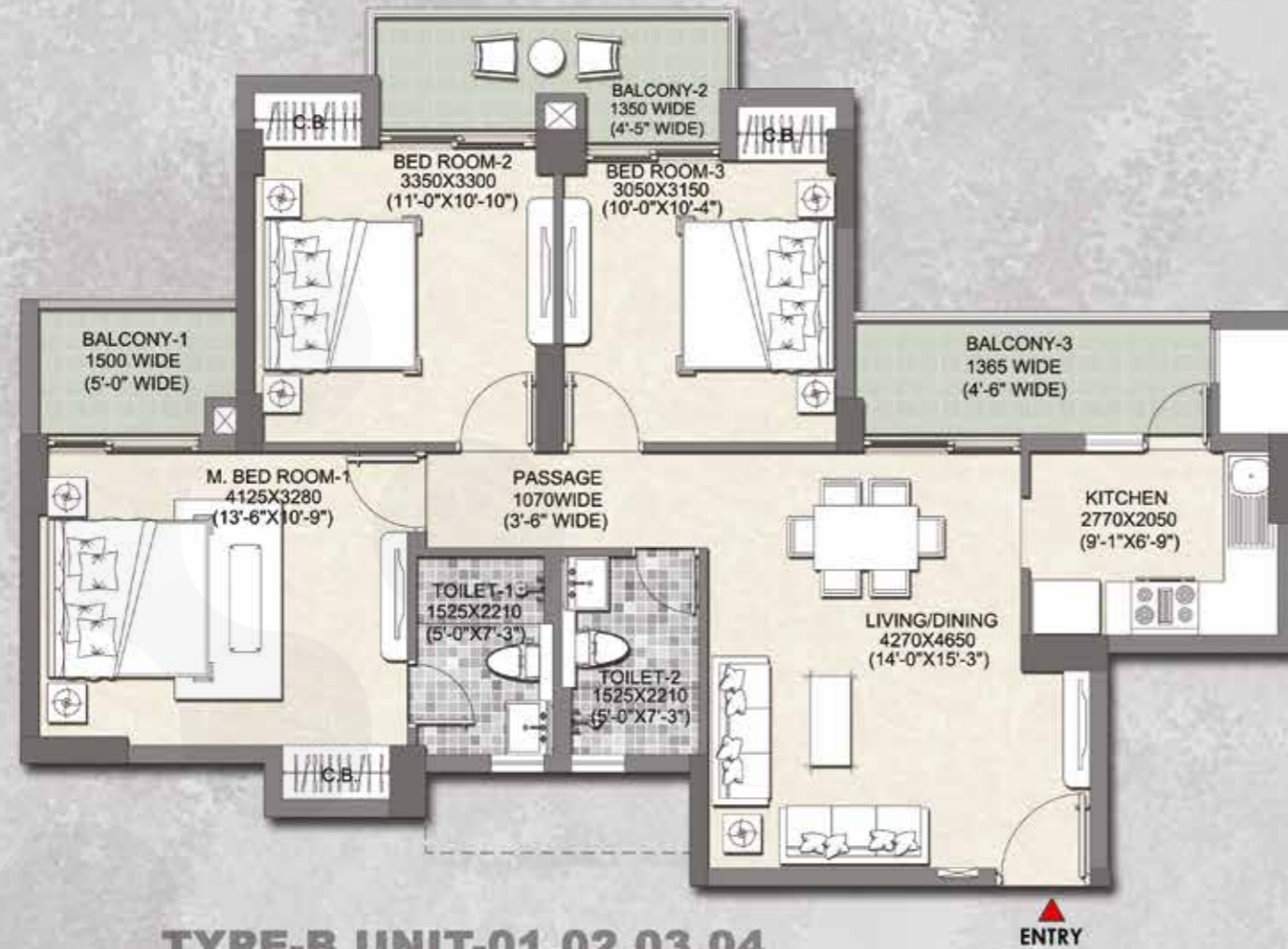
# EUREKA PARK

SECTOR 150 NOIDA



**TYPICAL UNIT**  
TOWER-08 TO 10

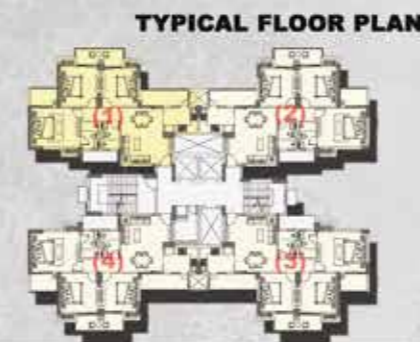
**3 BHK,  
2 TOILET**



**TYPE-B UNIT-01,02,03,04**  
**UNIT ORIENTATION AS PER TYPICAL FLOOR PLAN**

**DISCLAIMERS :**

All Dimensions are in millimeters (and in bracket feet/inches)  
Measurements are approximate and subject to minor variations. Furnitures, fixtures and specifications provided in the plan are not part of the offered apartment for sale.



**PHASE II**  
**BRIGHTUS**  
**1285**

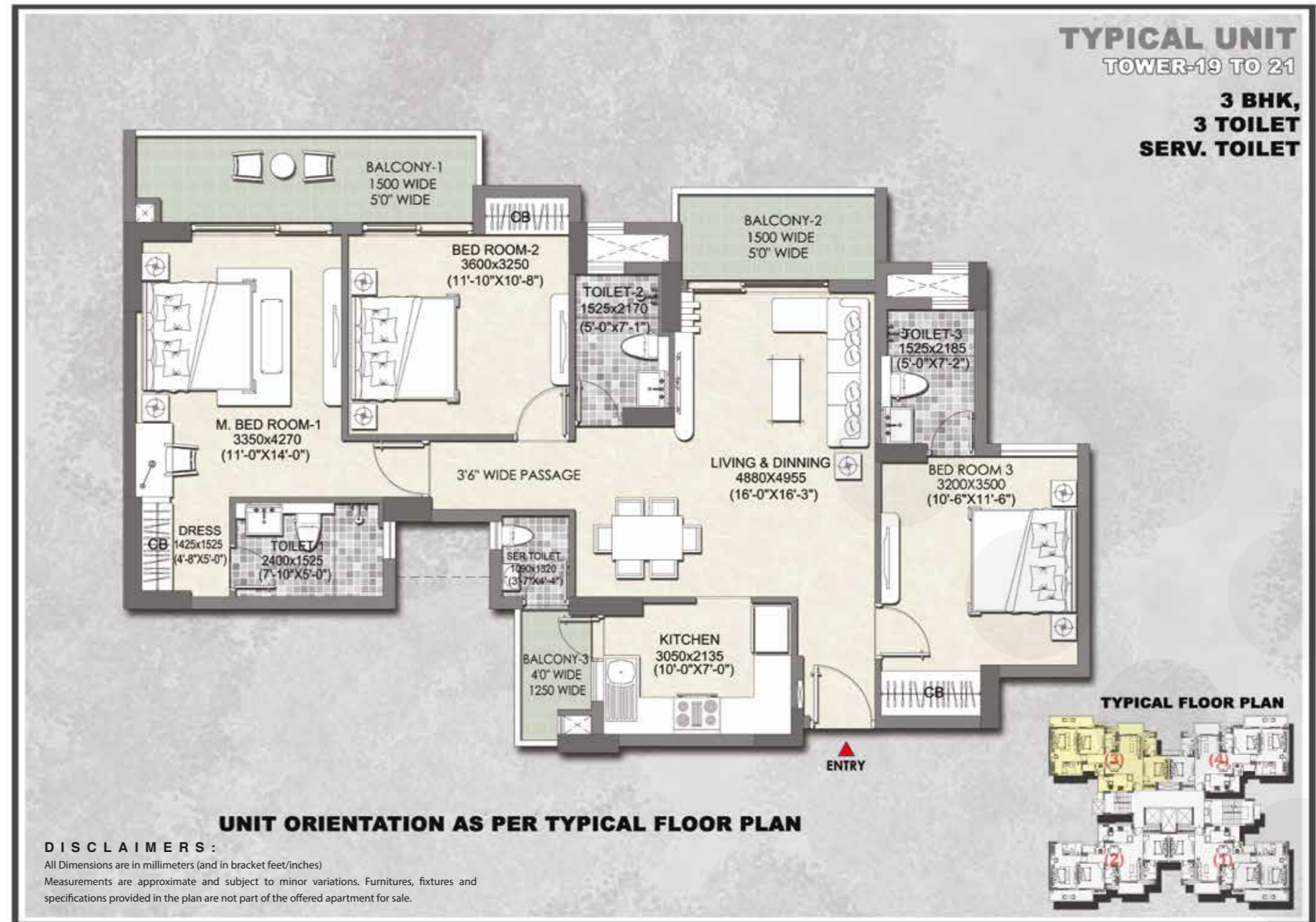
**CARPET AREA**  
783.41 SQ FT (72.781 SQ MT)  
**EXCLUSIVE BALCONY AREA**  
150.13 SQ FT (13.947 SQ MT)



**EUREKA**  
**PARK**  
SECTOR 150 NOIDA

**PHASE II**  
**PRIMUS**  
**1575**

**CARPET AREA**  
981.34 SQ FT (91.169 SQ MT)  
**EXCLUSIVE BALCONY AREA**  
169.38 SQ FT (15.736 SQ MT)



**EUREKA**  
**PARK**  
SECTOR 150 NOIDA

Marketed By  
**Madhyam.com**  
Call us: 80 1010 7070

Sales Gallery: Eureka Park, SC 02/A-1, Sector 150, Noida, Gautam Buddha Nagar, 201310.

UPRERA Regn. No. EUREKA PARK PHASE I - UPRERAPRJ5448 & PHASE II - UPRERAPRJ469983 available on [www.up-rera.in](http://www.up-rera.in)

Disclaimer :The project is developed and promoted in phases by Land Kart Builders Pvt. Ltd. ("Developer") - subsidiary of Tata Value Homes Limited. Sub Lease of the unit is subject to terms of the Application Form and Agreement to Sub lease.

Please refer to the latest brochure prior to investing in the property. The approvals can be checked at site office and in the office of the Developer. Developer reserves the right to make changes as per prevailing Government norms. Project is financed by Aditya Birla Finance Limited. For conversion 1 Sq Ft = 0.0929 sq m. 'TATA' and 'TATA VALUE HOMES' are the registered trademarks of Tata Sons Private Limited. For more information, please contact our site office at Sector 150, Noida, 201310. Visit: <https://www.tatarealty.in/project/eureka-park/>



**SCAN THE QR CODE FOR  
A VIRTUAL TOUR  
OF THE SHOW APARTMENT**