

# LOCATION MAP



**DISTANCE**  
 Sector-121 : 5 Minutes  
 Noida City Center : 10 Minutes  
 Sai Mandir : 7 Minutes  
 Fortis : 12 Minutes  
 Kalindi Kunj : 20 Minutes

MAP not to scale

*\*Time Durations mentioned above are approximate Durations. Company hold no responsibility of the accuracy.*

**EARTHCON**  
 concerned living

**Universal Contractors & Engineers Pvt. Ltd.**



**2/3/4 BHK Apartments**  
Greater Noida (WEST)

**RERA REGISTRATION NO: UPRERAPRJ4689**



Marketed by:



Follow us on: /teammadhyam E-mail: info@madhyam.com

**Madhyam.com** Cyprus (Europe) | Noida | Gurugram | Faridabad | Bhiwadi | Mathura | Chandigarh

Disclaimer : All Specifications, Designs, Layout, Images, Conditions are only indicative & some of these can be changed at the discretion of the builder/architect/authority. These are purely conceptual & constitute no legal offerings. While every attempt has been made to ensure the accuracy of the plans shown, all measurement, positioning, fixtures, fittings & any other data shown are an approximate interpretation for illustrative purpose only & are not to scale. No responsibility is taken for any error, omission, mis-statement or use of data shown. The company reserves the right to make changes in the plans, specifications, dimensions and elevations without any prior notice.

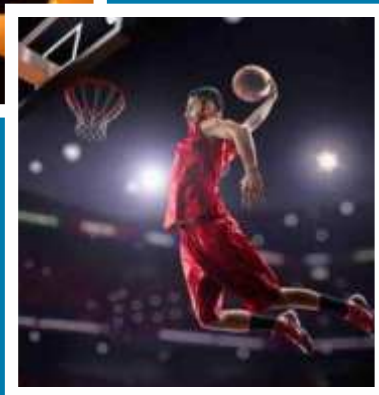
# FLOOR PLANS



## SWITCH TO SUPERIOR LIFE STYLE



- Penthouses with independent Terrace Garden
- Utility Balcony in every unit
- 24x7 Two level Security
- Wi-Fi Enabled Complex
- Piped Gas facility in every apartment.



- A Green Building Project
- Spread over 16.26 Acres of Land
- 78% Open Green Area
- Theme-based Landscaping with Lawns
- OAT (Open Air Theatre) / Rangmanch
- Refreshing Water Bodies and Fountains
- Landscaped Sunken Courts
- Pergola, Acupressure Walking Tracks, Yoga/ Meditation Lawn
- Grand Entrance Lobby in each Tower
- Sky-view Gallery in 4 bedroom units

# SITE MAP



- 4 BHK+5T
- 3BHK+4T
- 3BHK+3T
- 2BHK+Servant
- 2BHK
- 3BHK+2T (1350 Sq. Ft.)
- 2BHK (1036 Sq. ft.)

1. Meditation With Aroma Garden
2. Cr eche, Play School & Primary
3. Convenient Shopping Centr e
4. Kids Play Ar ea
5. Guard Room
6. Skylight
7. Tree Court
8. Accupressure Walkway
9. Health Care



# FLOOR PLANS



## Tower

F & G

Type : 2BHK, Saleable Area : 1036 Sq. Ft.

Balconies Area : 82.02 Sq. Ft.
Built Up Area : 797.07 Sq. Ft.
Carpet Area : 651.65 Sq. Ft.
Carpet Area including : 733.67 Sq. Ft. Balconies

# FLOOR PLANS



## Tower - 1

Type : 2BHK+Servant  
Saleable Area : 1175 Sq. Ft.

Balconies Area : 121.0 Sq. Ft.
Built Up Area : 904.50 Sq. Ft.
Carpet Area : 695.45 Sq. Ft.
Carpet Area including : 816.45 Sq. Ft. Balconies

## Tower

B, C, E, H & K

Type : 2BHK+Servant,  
Saleable Area : 1120 Sq. Ft.

Balconies Area : 83.53 Sq. Ft.
Built Up Area : 862.62 Sq. Ft.
Carpet Area : 697.72 Sq. Ft.
Carpet Area including : 781.25 Sq. Ft. Balconies



## Tower

F & G

Type : 3BHK+2T, Saleable Area : 1350 Sq. Ft.

Balconies Area : 115.93 Sq. Ft.
Built Up Area : 1037.74 Sq. Ft.
Carpet Area : 831.94 Sq. Ft.
Carpet Area including : 947.87 Sq. Ft. Balconies



# FLOOR PLANS



## Tower A & L

Type : 3BHK+Servant,  
3T, Saleable Area : 1550 Sq. Ft.

Balconies Area : 107.10 Sq. Ft.

Built Up Area : 1189.73 Sq. Ft.

Carpet Area : 968.11 Sq. Ft.

Carpet Area including : 1075.21 Sq. Ft.  
Balconies

# FLOOR PLANS



## Tower-D

Type : 4BHK+Servant+5T  
Saleable Area : 2225 Sq. Ft.

Balconies Area : 154.89 Sq. Ft.

Built Up Area : 1710.50 Sq. Ft.

Carpet Area : 1426.97 Sq. Ft.

Carpet Area including : 1581.86 Sq. Ft.  
Balconies

## Tower A & L

Type : 3BHK+Servant+4T  
Saleable Area : 1770 Sq. Ft.

Balconies Area : 113.88 Sq. Ft.

Built Up Area : 1358.10 Sq. Ft.

Carpet Area : 1123.75 Sq. Ft.

Carpet Area including : 1237.83 Sq. Ft.  
Balconies



## Tower-J

Type : 4BHK+Servant+5T  
Saleable Area : 2575 Sq. Ft.

Balconies Area : 270.60 Sq. Ft.

Built Up Area : 1981.10 Sq. Ft.

Carpet Area : 1574.44 Sq. Ft.

Carpet Area including : 1845.04 Sq. Ft.  
Balconies



# FLOOR PLANS



Where Luxury & Affordability Come Together !

## SPECIFICATIONS



### Tower

B, C, E, F, G, H & K

Type : 2BHK, Saleable  
Area : 930 Sq. Ft.

Balconies Area : 57.26 Sq. Ft.

Built Up Area : 716 Sq. Ft.

Carpet Area : 589.0 Sq. Ft.

Carpet Area Including  
Balconies : 646.26 Sq. Ft.

### Tower - I

Type : 2BHK, Saleable  
Area : 980 Sq. Ft.

Balconies Area : 102.68 Sq. Ft.

Built Up Area : 754 Sq. Ft.

Carpet Area : 676.22 Sq. Ft.

Carpet Area Including  
Balconies : 677.80 Sq. Ft.



#### Structure

- Earthquake Resistant RCC Frame Structure as per Seismic zone-4

#### Flooring

- Wooden Flooring in Master Bedroom/Vitrified Tiles in other Bedroom/drawing/dining/all stairs and corridors with marble/kota stone flooring.

#### Tiles

- Anti-Skid Tiles in Bathroom & Balconies.

#### Exterior

- Permanent finish/texture paint.

#### kitchen

- Slabs are well-finished granite stone with Stainless Steel sink and drain/board. Glazed Tiles Dado on wall upto 2 ft. over counter.

#### Bathroom

- Equipped with Parryware/Hindware/Cera or Equivalent, Wash basins and WCS. Chrome plated tap fitting of Marc, Cera or Equivalent.

#### Doors

- All Door frames in Marandi wood with skin moulded flush doors & window frames and shutters in Aluminium.

#### Painting

- Oil Bound Distemper in entire flat.

#### POP

- POP Punning & Cornices in entire flat.

#### Electrical

- Electrical (Copper) Wiring as per ISI code with modular switches. Circuits with MCBs of approved make Tv and Telephone points in every room.

#### Security

- Round-the-clock security system.